



**BUREAU
VERITAS**

TEST REPORT

LAB NO. : (8823)054-0017
DATE : Mar 13, 2023
PAGE : 1 OF 9

Applicant Name: PARTICLE INDUSTRIES,INC
Applicant Address: 325 9TH ST, SAN FRANCISCO, CA 94103 USA, 415-319-1553
Date of Submission: FEB 23, 2023
Test Period: FEB 23, 2023 TO MAR 2, 2023
Sample Description: Photon 2
Sample Size: 1
Style No. : PHN2



BUREAU VERITAS SHENZHEN CO.,LTD
DONGGUAN BRANCH

Lisa Bai
Analytical lab Senior Supervisor

RT/ Min Chen

REMARK

If there are questions or concerns on this report, please contact the following persons:

Report Enquiry: (86) 0769 89952999 Ext. 8175 CPSAnalytical.DG@bureauveritas.com
Business Contact: (86) 0769 85893595

This report shall not be reproduced except in full, without the written approval of our laboratory.



LAB NO. : (8823)054-0017
DATE : Mar 13, 2023
PAGE : 2 OF 9

SUMMARY OF TEST RESULTS

TEST REQUESTED	CONCLUSION	REMARK
European Parliament and Council Directive 2011/65/EU on the Restriction of the Use of Certain Hazardous Substances in Electrical and Electronic Equipment (RoHS) with its Amendment Directive (EU)2015/863	PASS	-

Photo of the Submitted Sample

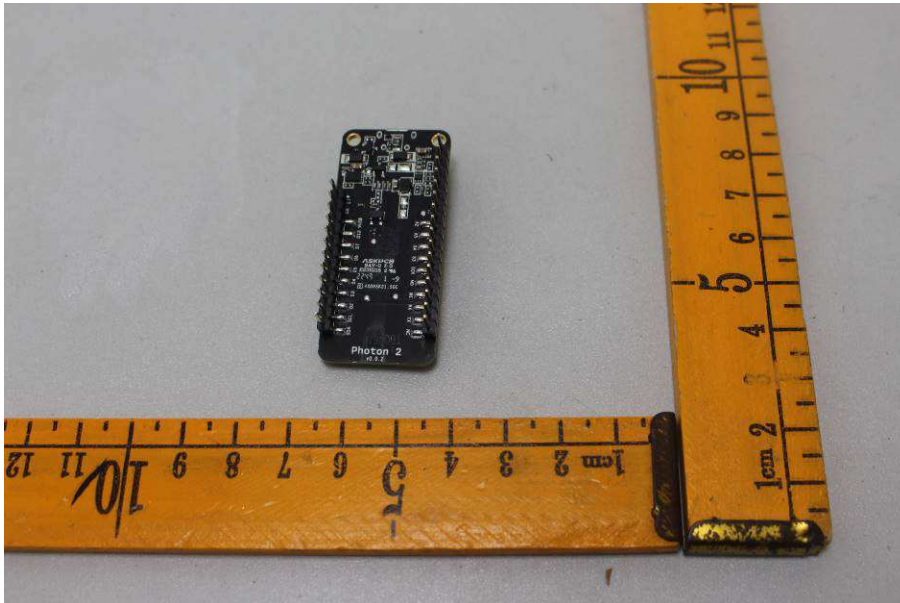
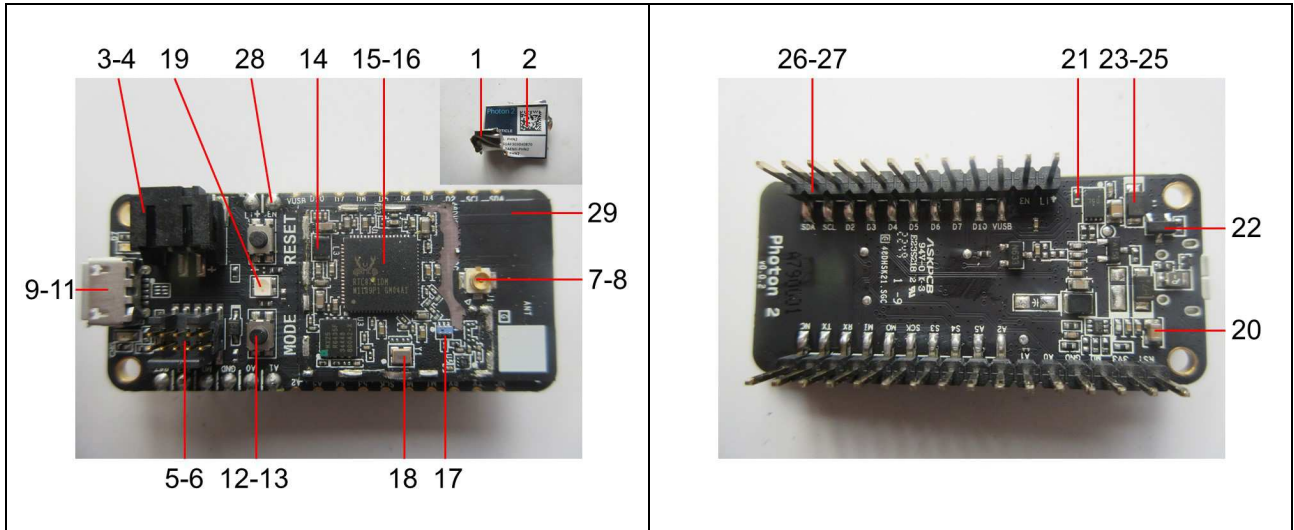


Photo of Test Item(s)





LAB NO. : (8823)054-0017
 DATE : Mar 13, 2023
 PAGE : 5 OF 9

Component Description List

Test Item(s)	Component Description(s)	Location	Style(s)
1	Silvery metal	Cover, PCB	-
2	White/black/blue printed yellow plastic	Sticker, cover, PCB	-
3	Black plastic	Socket, PCB	-
4	Silvery metal	Pin, socket, PCB	-
5	Black plastic	Socket, PCB	-
6	Golden metal	Pin, socket, PCB	-
7	Beige plastic	Socket, PCB	-
8	Golden metal	Pin, socket, PCB	-
9	Silvery metal	Contact plate, USB plug, PCB	-
10	Silvery metal	Pin, USB plug, PCB	-
11	Black plastic	Pin holder, USB plug, PCB	-
12	Black plastic	Touch switch, PCB	-
13	Silvery metal	Touch switch, PCB	-
14	Black metal	Inductor, PCB	-
15	Black body	IC, PCB	-
16	Copper/silvery metal	Plate, IC, PCB	-
17	Blue body	EC, PCB	-
18	Silvery/golden body	EC, PCB	-
19	White body	SMD LED, PCB	-
20	Brown body	SMD resistor, PCB	-
21	Black printed white body	SMD capacitor, PCB	-
22	Black body	SMD transistor, PCB	-
23	Black body	SMD diode, PCB	-
24	Silvery solder	Solder, SMD diode, PCB	-
25	Copper/silvery metal	Plate, SMD diode, PCB	-
26	Silvery metal	Pin, PCB	-
27	Black plastic	Pin holder, PCB	-
28	Silvery solder	Solder, PCB	-
29	Black PCB	PCB	-



LAB NO.
DATE
PAGE

: (8823)054-0017
: Mar 13, 2023
: 6 OF 9

TEST RESULT

Compliance Test – European Parliament and Council Directive 2011/65/EU on the Restriction of the Use of Certain Hazardous Substances in Electrical and Electronic Equipment (RoHS) with its Amendment Directive (EU)2015/863

Test Method : See Appendix.

-	Result (s)									
Parameter	Lead (Pb)	Mercury (Hg)	Cadmium (Cd)	Chromium VI (Cr VI)	PBBs & PBDEs	BBP	DBP	DEHP	DIBP	Conclusion
Unit	mg/kg									-
Test Item(s)	-	-	-	-	-	-	-	-	-	-
1	BL	BL	BL	Negative*	NA	NA	NA	NA	NA	PASS
2	BL	BL	BL	BL	BL	BL*	BL*	BL*	BL*	PASS
3	BL	BL	BL	BL	BL*	BL*	BL*	BL*	BL*	PASS
4	BL	BL	BL	BL	NA	NA	NA	NA	NA	PASS
5	BL	BL	BL	BL	BL	BL*	BL*	BL*	BL*	PASS
6	BL	BL	BL	BL	NA	NA	NA	NA	NA	PASS
7	BL	BL	BL	BL	BL	BL*	BL*	BL*	BL*	PASS
8	BL	BL	BL	BL	NA	NA	NA	NA	NA	PASS
9	BL	BL	BL	Negative*	NA	NA	NA	NA	NA	PASS
10	BL	BL	BL	BL	NA	NA	NA	NA	NA	PASS
11	BL	BL	BL	BL	BL	BL*	BL*	BL*	BL*	PASS
12	BL	BL	BL	BL	BL	BL*	BL*	BL*	BL*	PASS
13	BL	BL	BL	Negative*	NA	NA	NA	NA	NA	PASS
14	BL	BL	BL	BL	NA	NA	NA	NA	NA	PASS
15	BL*	BL	BL	BL	NA	NA	NA	NA	NA	PASS
16	BL	BL	BL	BL	NA	NA	NA	NA	NA	PASS
17	BL	BL	BL	BL	NA	NA	NA	NA	NA	PASS
18	BL	BL	BL	BL	NA	NA	NA	NA	NA	PASS
19	BL	BL	BL	BL	NA	NA	NA	NA	NA	PASS
20	BL	BL	BL	BL	NA	NA	NA	NA	NA	PASS
21	BL	BL	BL	BL	NA	NA	NA	NA	NA	PASS
22	BL*	BL	BL	BL	NA	NA	NA	NA	NA	PASS
23	BL	BL	BL	BL	BL*	BL*	BL*	BL*	BL*	PASS
24	BL	BL	BL	BL	NA	NA	NA	NA	NA	PASS
25	BL	BL	BL	BL	NA	NA	NA	NA	NA	PASS
26	BL	BL	BL	BL	NA	NA	NA	NA	NA	PASS



LAB NO. : (8823)054-0017
 DATE : Mar 13, 2023
 PAGE : 7 OF 9

TEST RESULT

-	Result (s)									
Parameter	Lead (Pb)	Mercury (Hg)	Cadmium (Cd)	Chromium VI (Cr VI)	PBBs & PBDEs	BBP	DBP	DEHP	DIBP	Conclusion
Unit	mg/kg									-
Test Item(s)	-	-	-	-	-	-	-	-	-	-
27	BL	BL	BL	BL	BL*	BL*	BL*	BL*	BL*	PASS
28	BL	BL	BL	BL	NA	NA	NA	NA	NA	PASS
29	BL	BL	BL	BL	BL	BL*	BL*	BL*	BL*	PASS

Note / Key:

BL = Below limit OL = Over limit ND = Not detected NA = Not applicable
 mg/kg = milligram(s) per kilogram = ppm = part(s) per million
 Detection Limit : See Appendix.

Remark:

- *Denotes as reported result(s) was (were) performed by wet chemistry method. Others were screened by XRF. For XRF screening, the result(s) of Cr VI was (were) reported as total chromium and the result(s) of PBBs and PBDEs was (were) reported as total bromine. Also, the XRF result(s) may be different to the actual content based on various factors including, but not limit to, sample size, thickness, area, non-uniformity composition, surface flatness.
- *Result(s) of Cr VI for metallic material(s) was (were) expressed in term of positive and negative. Negative means the absence of Cr VI on the tested areas and the result(s) was (were) regarded as in compliance with European Council Directive 2011/65/EU, Article 4(1). While, positive means the presence of Cr VI on tested areas and the result(s) was (were) regarded as in conflict with European Council Directive 2011/65/EU, Article 4(1).
- According to European Council Directive 2011/65/EU, Article 5 "Adaptation of the Annexes to scientific and technical progress", exemption(s) should be granted to the materials and components of Test Item(s) in the lists in Annexes III and IV of this directive.

APPENDIX

List of Analytes and their Corresponding Test Methods, Detection Limit and Maximum Allowable Limit							
[Compliance Test for European Parliament and Council Directive 2011/65/EU] :							
No.	Name of Analytes	Detection Limit(mg/kg)				Wet Chemistry	Maximum Allowable Limit (mg/kg)
		X-ray fluorescence (XRF)^[a]					
		Plastic	Metal/Glass/ Ceramic	Others			
1	Lead (Pb)	100	200	200	10 ^[b]	1000	
2	Cadmium (Cd)	50	50	50	10 ^[b]	100	
3	Mercury (Hg)	100	200	200	10 ^[c]	1000	
4	Chromium (Cr)	100	200	200	NA	NA	
5	Chromium VI (Cr VI)	NA	NA	NA	See ^[d] /10 ^[e] /3 ^[f,g]	1000 / Negative ^[h]	
6	Bromine (Br)	200	NA	200	NA	NA	
7	Polybromobiphenyls (PBBs) - Bromobiphenyl (MonoBB) - Dibromobiphenyl (DiBB) - Tribromobiphenyl (TriBB) - Tetrabromobiphenyl (TetraBB) - Pentabromobiphenyl (PentaBB) - Hexabromobiphenyl (HexaBB) - Heptabromobiphenyl (HeptaBB) - Octabromobiphenyl (OctaBB) - Nonabromobiphenyl (NonaBB) - Decabromobiphenyl (DecaBB)	NA	NA	NA	Each 50 ^[i]	Sum 1000	
8	Polybromodiphenyl ethers (PBDEs) - Bromodiphenyl ether (MonoBDE) - Dibromodiphenyl ether (DiBDE) - Tribromodiphenyl ether (TriBDE) - Tetrabromodiphenyl ether (TetraBDE) - Pentabromodiphenyl ether (PentaBDE) - Hexabromodiphenyl ether (HexaBDE) - Heptabromodiphenyl ether (HeptaBDE) - Octabromodiphenyl ether (OctaBDE) - Nonabromodiphenyl ether (NonaBDE) - Decabromodiphenyl ether (DecaBDE)	NA	NA	NA	Each 50 ^[i]	Sum 1000	
9	- Dibutyl phthalate (DBP) - Butyl benzyl phthalate (BBP) - Di-2-ethylhexyl phthalate (DEHP) - Diisobutyl phthalate (DIBP)	NA	NA	NA	Each 50 ^[j]	Each 1000	



LAB NO. : (8823)054-0017
DATE : Mar 13, 2023
PAGE : 9 OF 9

NA = Not applicable IEC = International Electrotechnical Commission

- [a] Test method with reference to International Standard IEC 62321-3-1: 2013.
- [b] Test method with reference to International Standard IEC 62321-5: 2013.
- [c] Test method with reference to International Standard IEC 62321-4:2013+A1:2017.
- [d] Metal - Test method with reference to International Standard IEC 62321-7-1: 2015.
- [e] Polymers and Electronics - Test method with reference to European Standard EN 62321-7-2: 2017.
- [f] Leather - Test method International Standard ISO 17075-1:2017.
- [g] Other Than Metal, Leather, Polymers and Electronics - Test method with reference to International Standard ISO 17075-1:2017.
- [h] Result(s) of Cr VI for metallic material(s) was (were) expressed in term of positive and negative. Negative means the absence of Cr VI on the tested areas and the result(s) was (were) regarded as in compliance with European Parliament and Council Directive 2011/65/EU, Article 4(1). While, positive means the presence of Cr VI on tested areas and the result(s) was (were) regarded as in conflict with European Parliament and Council Directive 2011/65/EU, Article 4(1).
- [i] Test method with reference to International Standard IEC 62321-6: 2015.
- [j] Test method with reference to International Standard IEC 62321-8: 2017.

Testing Approach [Compliance Test for European Parliament and Council Directive 2011/65/EU] :

The testing approach was with reference to the following document(s).

- 1 International Standards IEC 62321-1: 2013 and IEC 62321-2: 2013
- 2 "RoHS Enforcement Guidance Document Version 1" by EU RoHS Enforcement Authorities Informal Network. (May 2006)
- 3 "RoHS Regulations - Government Guidance Notes" by United Kingdom Department for Business Innovation & Skills. (February 2011)
- 4 "Final Report to RoHS substances (Hg, Pb, Cr(VI), Cd, PBB and PBDE) in electrical and electronic equipment in Belgium" by Belgium Federal Public Service Health, Food Chain Safety and Environment. (November 2005)

*** End of Report ***